

D.A.F.

CF 75.310 6x4 RHD Whale vacuum tank 11.8 m3 / 2 comp

GENERAL

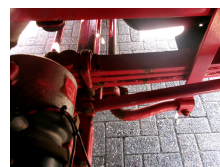
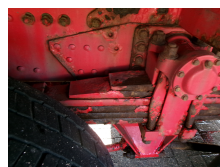
ID number	ED829538
Brand	D.A.F.
Type	CF 75.310 6x4 RHD Whale vacuum tank 11.8 m3 / 2 comp
Chassis number	XLRAT75PC0E829538
1st Registration Date	27-01-2009
Mileage (Km)	205500
Country of registration	UK
Dimensions	1000x255x400 cm

POWERTRAIN

Engine power (hp)	310
Gearbox type	Manual
Number of gears	8
Euro standard	5
Differential lock	✓
ABS	✓

CHASSIS

Empty weight	15340 kg
Gross Combined Weight	29500 kg
Gross weight	26000 kg
Wheelbase	435 cm (1-2) 145 cm (2-3)
Chassis height	100 cm
Fuel Capacity	300 L



ADDITIONAL INFO

NON DUTY FREE VEHICLE, REQUIRES CUSTOMS CLEARANCE // RIGHT-HAND DRIVE // Whale steel tipping vacuum tank, Capacity 11820 liters, 2 Compartments (7250 (clean), 4500 (foul), Vacuum pump Kaiser KWP 2000l with a capacity of 1700 m3 per hour, High pressure pump Pratissoli MK60 with a capacity of 346 liters per minute at 158.5 bar, Jetting hose, Suction boom, Max working pressure 1.0 bar or -1.0 bar vacuum // Truck 6x4, Euro 5, AdBlue, Manual gearbox with 8 gears (4 low, 4 high), Full steel suspension, Diff. lock, Day cabin, Airconditioning, Digital tachograph, RIGHT-HAND-DRIVE, Shipment dimensions 1000x255x400 cm

TYRES

Tyre size axle 1	385/65R22.5
Tyre size axle 2	295/80R22.5
Tyre size axle 3	295/80R22.5

AXLES

Number of axles	3
Number of driven axles	2
Configuration	6x4
Suspension axle 1	Steel suspension
Suspension axle 2	Steel suspension
Suspension axle 3	Steel suspension
Steering axle Axle 1	✓

SUPERSTRUCTURE

Make superstructure	Whale
Tipper	✓
Sides for tipping	1

CABIN

Cabin Type	Day cabin
Airconditioning	✓
Right hand drive	✓

TANK

Volume (Liters)	11820
Number of compartments	2
Volume compartments (Liters)	7250 (clean), 4500 (foul)
Material code	BS EN 10025 S275J0
Tank material	Staal
Pump	✓
Pump -brand and type	Pratissoli MK60
High pressure pump	✓
Maximum work pressure	1.0 bar / -1.0 vacuum
Wall thickness	5.0 mm
Clean watertank	✓
Cleaning / vacuum	✓