

Spitzer

Powder tank alu 37 m3 / 1 comp

GENERAL

ID number	E0041265
Brand	Spitzer
Type	Powder tank alu 37 m3 / 1 comp
Chassis number	VF9SFS27MDX041265
1st Registration Date	01-01-2013
Country of registration	UK
Dimensions	1020x250x370 cm

POWERTRAIN

ABS 


CHASSIS

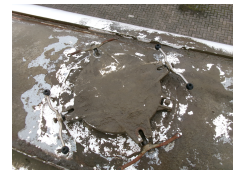
Empty weight	4900 kg
Gross weight	39000 kg
Chassis height	100 cm
Kingpin height	120 cm
Aluminium rims	

TYRES

Tyre size axle 1	385/65R22.5
Tyre size axle 2	385/65R22.5
Tyre size axle 3	385/65R22.5

AXLES

Number of axles	3
Brand axles	Mercedes
Disc brake	
Suspension axle 1	Air suspension
Suspension axle 2	Air suspension
Suspension axle 3	Air suspension



ADDITIONAL INFO

Aluminium powder tank / cement silo,
Capacity 37000 litres, 1 Compartment,
Test pressure 3.0 bar, Max. working
pressure 2.0 bar, ABS, Air suspension,
Mercedes axles, Disc brakes, Alloy wheels,
Shipment dimensions 1020x250x370 cm

TANK

Volume (Liters)	37000
Number of compartments	1
Volume compartments (Liters)	37000
Tank material	Aluminium
Test pressure	3 bar
Maximum work pressure	2 bar
Powder	