

# Robine

## Gas tank steel 49 m3 + pump/counter

### GENERAL

ID number	0043035
Brand	Robine
Type	Gas tank steel 49 m3 + pump/counter
Chassis number	VF9SR3401W0043035
1st Registration Date	18-12-1998
Country of registration	FR
Dimensions	1210x250x385 cm

### POWERTRAIN

ABS	✓
-----	---

### CHASSIS

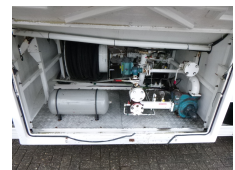
Empty weight	12630 kg
Gross weight	34000 kg

### TYRES

Tyre size axle 1	385/65R22.5
Tyre size axle 2	385/65R22.5
Tyre size axle 3	385/65R22.5

### AXLES

Number of axles	3
Brand axles	Smb
Drum brake	✓
Suspension axle 1	Air suspension
Suspension axle 2	Air suspension
Suspension axle 3	Air suspension



### ADDITIONAL INFO

Steel LPG tank, Capacity 49025 litres, Blackmer hydraulic pump, Counter, Hose reel, Test pressure 25 bar, Max. working pressure 19.3 bar, Wall thickness 9.85 mm(shell and rear head), 9.00 mm (front head), Tank material code P440NJ4, ABS, Air suspension, SMB axles, Drum brakes, Shipment dimensions 1210x250x385 cm

## TANK

Volume (Liters)	49025
Number of compartments	1
Volume compartments (Liters)	49025
Material code	P440NJ4
Tank material	Staal
Pump	✓
Pump -brand and type	Blackmer
Counter	✓
Hoses	✓
Test pressure	25 bar
Maximum work pressure	19.3 bar
Wall thickness	9.85 mm(shell and rear head), 9.00 mm (front head)
Gas	✓