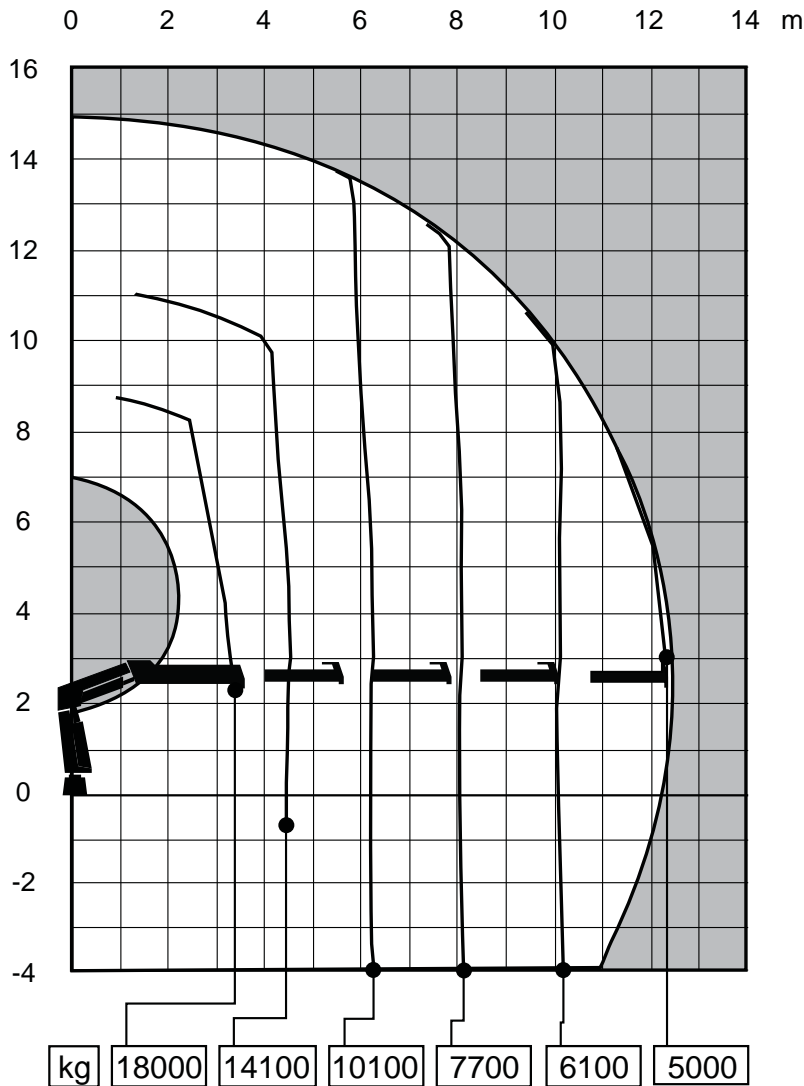


## Load Diagram



## Capacity and performance

Lifting capacity with ADC	626	(kNm)
Standard lifting capacity at standard outreach with ADC	3.3	(m) - 18000 (kg)
	4.5	(m) - 14100 (kg)
	6.2	(m) - 10100 (kg)
	8.1	(m) - 7700 (kg)
	10.1	(m) - 6100 (kg)
	12.3	(m) - 5000 (kg)

Hydraulic boom extension 7.8 (m)

Lifting height above installation level hydraulic 14.9 (m)

Slewing torque 69 (kNm)

V80 Slewing speed 10 (°/s)

Slewing angle Continuous (°)

Lifting speed 0.7 (m/s)

## Functional demands

Recommended oilflow low 90 (l/min) V91M Fixed

Recommended oilflow high 140 (l/min) V91M Variable

Working pressure 32 (MPa)

Max slope viable at full capacity 5 (°)

Oil in tank 200 (l)

Tank capacity 260 (l)

## Weights and measurements

Height in folded position 2470 (mm)

Width in folded position 2500 (mm)

Installation space needed 1520 (mm)

Weight of crane 5730 (kg)

## Side View Unfolded Close in Area

